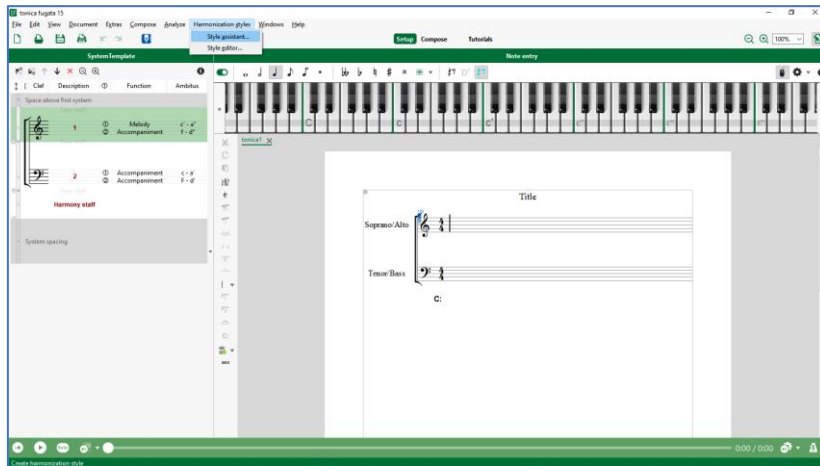


Brief instructions for importing a composition style into tonica *fugata*

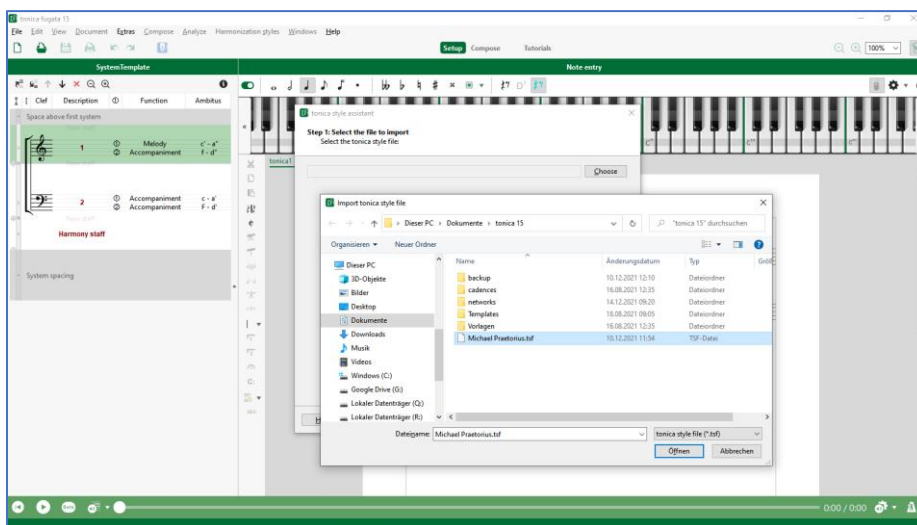
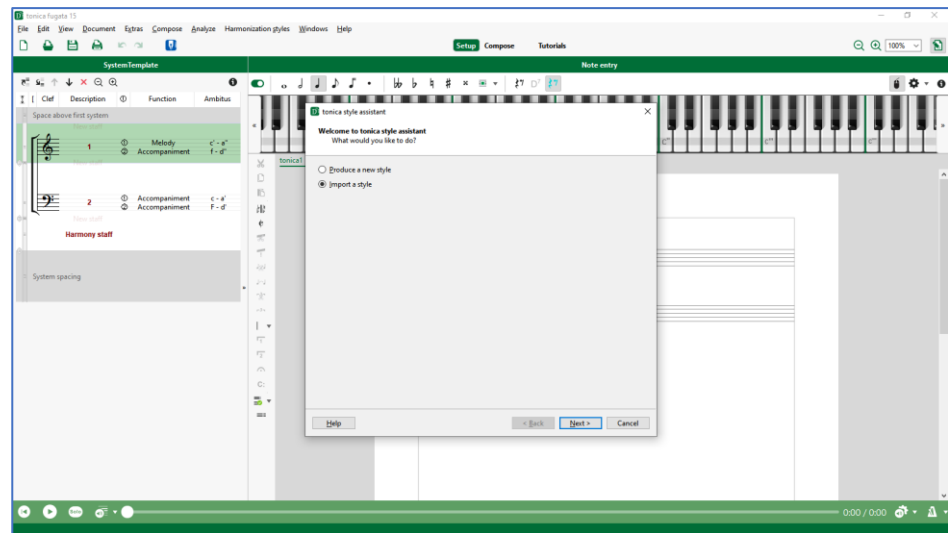


1. Download and save the tonica style.

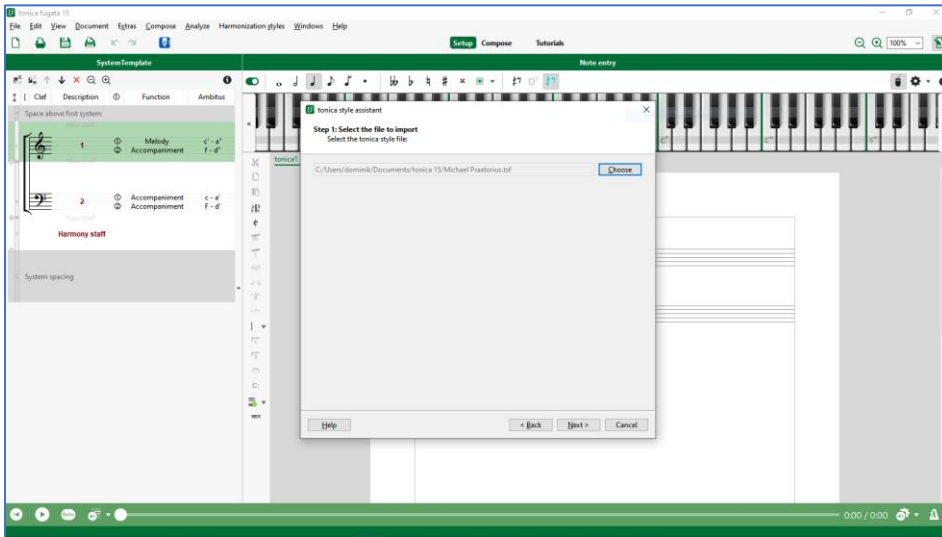
2. Open any file or create a new empty score.

3. Select the menu entry
→ Harmonization styles
→ Style assistant...

4. Select
"Import a style" and
click "Next".

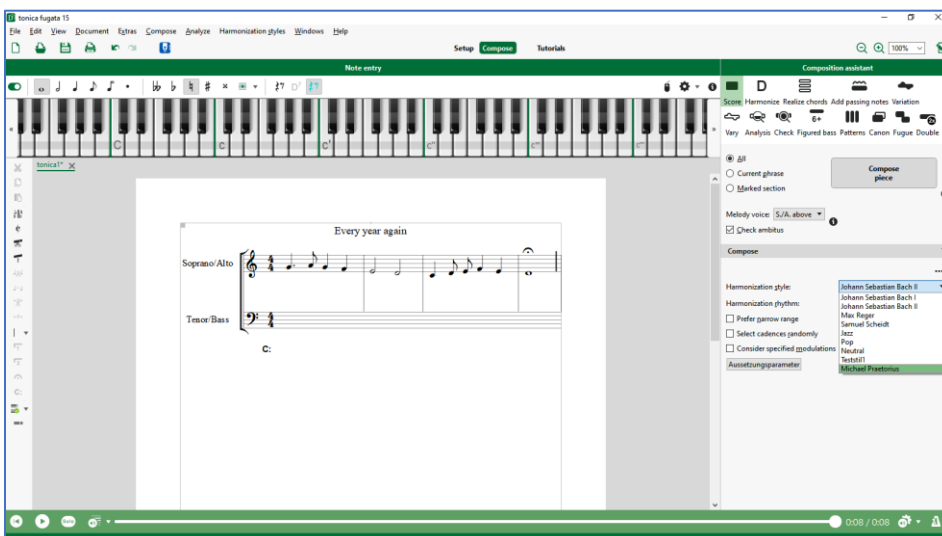
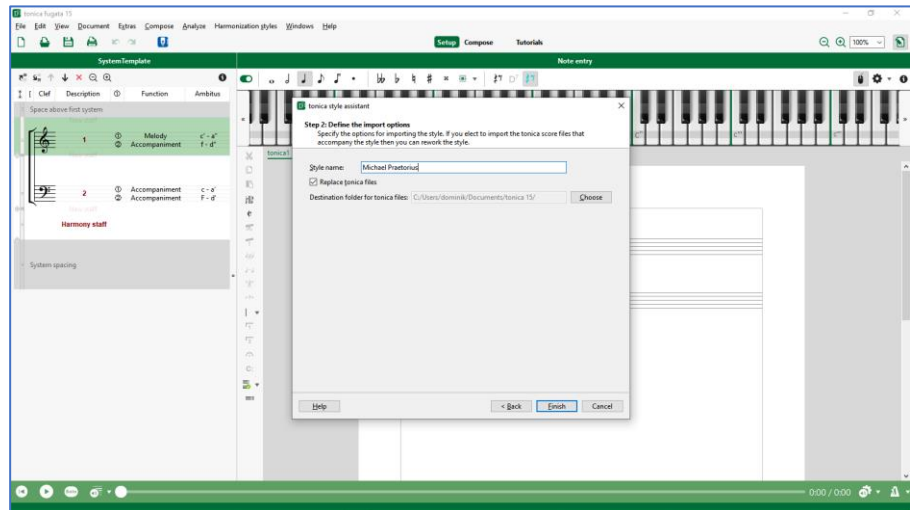


5. In the following
dialog, select the
downloaded style file
and click "Open".



6. Immediately afterwards click on "Next".

7. You do not need to change anything in the following dialog and simply click on "Finish".



Ready! You can now access the new style for composition and harmonization.